



ADVANCE ADAPTERS INC.

P.O. Box 247, 4320 Aerotech Center Way

Paso Robles, CA 93447

Telephone: (800) 350-2223 Fax: (805) 238-4201

P/N: 712592

PAGE 1 OF 6

Page Rev. Date: 07-31-03

FORD 4.0L ENGINE TO CHEVY 2.8L 700R4 TRANSMISSION

KIT CONSISTS OF:

| No. | Qty | Part No. | Description |
|-----|-----|------------|--------------------------------------|
| 1. | 1 | 712592A | ADAPTER PLATE |
| 2. | 1 | 712592R | TORQUE CONVERTER ADAPTER |
| 3. | 1 | 712592D | DUST COVER (modified) |
| 4. | 1 | 712592T | 4" OF 2-1/4"- 14 GAGE EXHAUST TUBING |
| 5. | 1 | 712592B | EXHAUST BRACKET |
| 6. | 2 | 716132-DOW | TRANS. DOWEL PINS |
| 7. | 4 | 720034 | 10mm x 1.5 x 45mm H.H.C.S. |
| 8. | 4 | 720042 | 12mm x 1.75 x 45mm H.H.C.S. |
| 9. | 2 | 720068 | 12mm x 1.75 x 40mm H.H.C.S. |
| 10. | 1 | 720069 | 10mm x 1.5 x 50mm H.H.C.S. |
| 11. | 1 | 720070 | 10mm x 1.5 x 45mm S.H.C.S. |
| 12. | 3 | 720071 | 10mm x 1.5 x 25mm S.H.C.S. |
| 13. | 4 | 720072 | 10mm x 1.5 x 20mm S.H.C.S. |
| 14. | ? | ?? | DUST COVER FASTENERS |

OPTIONAL ITEMS:

23-R700 - Lokar shifter
23-0002 - Lokar dipstick
23-1500 - Trans Cooler lines
911341 - Torque converter
spacers .032" thick.
*The TV kickdown cable and
brackets should be purchased
from Bowtie overdrive, Tel. #
(760)-947-5240*

NOTE: This kit ONLY FITS the Chevy 2.8L 700R4 version transmission:

The General Motors 700R-4 has a case length of 23-3/8", and is available in three different engine to transmission bolt patterns. The case is available with a Chevy bolt pattern that has the top two holes 8-1/4" apart, a Buick bolt pattern that has the top two holes 7" apart, and a 2.8L Chevy bolt pattern that has the top two holes 5-1/8" apart.

Background Information:

This kit was designed in conjunction with kit P/N 50-8410 to replace the automatic transmission in 4WD Ford Explorers and Rangers with the 4.0L engine. This kit will also work with vehicles that had a manual transmission behind the 4.0L engine, but these directions cater toward replacing an automatic. When using this kit in conjunction with Part No. 50-8410, no driveshaft modifications should be necessary. If you are using this kit for a 2WD application or a 4WD application that does not use the stock transfer case, driveshaft modification will most likely be necessary.

Installation Instructions:

1. Remove the stock transfer case, transmission, starter, and starter plate.
2. Thoroughly clean the rear of engine and both sides of the starter plate.
3. Press the transmission dowel pins (716132-DOW) completely into the new adapter plate.
3. Reinstall the starter plate, then position the adapter plate (712592A) over the the stock engine dowel pins.
4. Apply blue Loctite and torque the bolts (P/N's 720034 , 720069, 720070) to 35 ft./lbs.



SPECIAL NOTE: The components packaged in this kit have been assembled and machined for specific type of conversions. Modifications to any of the components will void any possible warranty or return privileges. If you do not fully understand modifications or changes that will be required to complete your conversion, we strongly recommend that you contact our sales department for more information. This instruction sheet is only to be used for the assembly of Advance Adapter components. We recommend that a service manual pertaining to your vehicle be obtained for specific torque values, wiring diagrams and other related equipment. These manuals are normally available at automotive dealerships and parts stores.

FORD 4.0L ENGINE TO CHEVY 2.8L 700R4 TRANSMISSION

5. Bolt the torque converter adapter to your 2.8L 700R4 torque converter using blue Loctite on bolts P/N 720071, and torque to 35 ft./lbs.
6. Slide the torque converter into the transmission, making sure the torque converter seats completely into transmission.
7. Raise the transmission into place and push transmission onto the dowel pins. **(NOTE: NEVER USE THE BOLTS TO PULL THE TRANSMISSION UP TO THE ENGINE.)**
8. Tighten the transmission to the adapter plate using the supplied 12mm bolts (P/N 720042 & 720068). Torque bolts to 35 ft./lbs.
9. Check the clearance between the torque converter adapter ring and the stock flexplate. Push the torque converter completely into the transmission and measure the clearance between the torque converter adapter ring and the flexplate. A set of feeler gages works well for this. Ideally, this measurement should be between .125" and .188". If the measurement is out of this range, please call Advance Adapters so that we can send you torque converter shims (P/N 911341) to correct this problem.
10. Bolt the flexplate to the torque converter adapter with the 10mm bolts (P/N. 720072) and torque to 25 ft./lbs.
11. Install the starter and included dust cover. Fasteners have been provided for mounting the dust cover. Reuse your original Ford starter bolts.
12. Install the TV cable setup. This is necessary for a 700R4 transmission. **SEVERE TRANSMISSION DAMAGE WILL OCCUR IF THE VEHICLE IS DRIVEN WITHOUT THE TV CABLE.** (Bowtie Overdrives makes a kit to mount the TV cable to the Ford fuel injection.)



SPECIAL NOTE: The components packaged in this kit have been assembled and machined for specific type of conversions. Modifications to any of the components will void any possible warranty or return privileges. If you do not fully understand modifications or changes that will be required to complete your conversion, we strongly recommend that you contact our sales department for more information. This instruction sheet is only to be used for the assembly of Advance Adapter components. We recommend that a service manual pertaining to your vehicle be obtained for specific torque values, wiring diagrams and other related equipment. These manuals are normally available at automotive dealerships and parts stores.

FORD 4.0L ENGINE TO CHEVY 2.8L 700R4 TRANSMISSION

13. Install the shifter, transmission cooler lines, and torque converter lockup wiring.
14. Wire the neutral safety switch using the wire diagram on page 5 or 6 of these instructions. Also install a torque converter lockup kit.
15. Cut the exhaust Y-pipe in the middle of the center straight section, as seen in the picture (right).
16. Install the one half of the Y-pipe to each exhaust manifold. Leave the bolts loose to allow adjustment for their position. Bolt the passenger side of the Y-pipe to the catalytic converter. Slide the short section of included exhaust tubing over one half of the Y-pipe and align two halves so that the short section will slide over both halves



of the Y-pipe. Clearance the pipe on the passenger side next to the bellhousing may be necessary (see photo). If a welder is available, tack the short section of the tubing to each half of the Y-pipe. Now, remove the Y-pipe and weld all the way around both seams. If a welder is not available, you may use a flexible style exhaust tubing available from Napa, P/N 40005. Use the bracket included in the kit to relocate your catalytic converter hanger.



17. **If you are also installing transfer case adapter Part No. 50-8410, you may continue with the directions included with that kit.**
18. If the stock Borg Warner transfer case is not being reinstalled, a new crossmember mount will need to be fabricated.
19. Install the transfer case, if applicable, and modify driveshafts to fit.

SPECIAL NOTE: The components packaged in this kit have been assembled and machined for specific type of conversions. Modifications to any of the components will void any possible warranty or return privileges. If you do not fully understand modifications or changes that will be required to complete your conversion, we strongly recommend that you contact our sales department for more information. This instruction sheet is only to be used for the assembly of Advance Adapter components. We recommend that a service manual pertaining to your vehicle be obtained for specific torque values, wiring diagrams and other related equipment. These manuals are normally available at automotive dealerships and parts stores.

ADVANCE ADAPTERS INC.

P.O. Box 247, 4320 Aerotech Center Way

Paso Robles, CA 93447

Telephone: (800) 350-2223 Fax: (805) 238-4201

P/N: 712592

PAGE 4 OF 6

Page Rev. Date: 07-31-03

FORD 4.0L ENGINE TO CHEVY 2.8L 700R4 TRANSMISSION



SPECIAL NOTE: The components packaged in this kit have been assembled and machined for specific type of conversions. Modifications to any of the components will void any possible warranty or return privileges. If you do not fully understand modifications or changes that will be required to complete your conversion, we strongly recommend that you contact our sales department for more information. This instruction sheet is only to be used for the assembly of Advance Adapter components. We recommend that a service manual pertaining to your vehicle be obtained for specific torque values, wiring diagrams and other related equipment. These manuals are normally available at automotive dealerships and parts stores.

ADVANCE ADAPTERS INC.

P.O. Box 247, 4320 Aerotech Center Way

Paso Robles, CA 93447

Telephone: (800) 350-2223

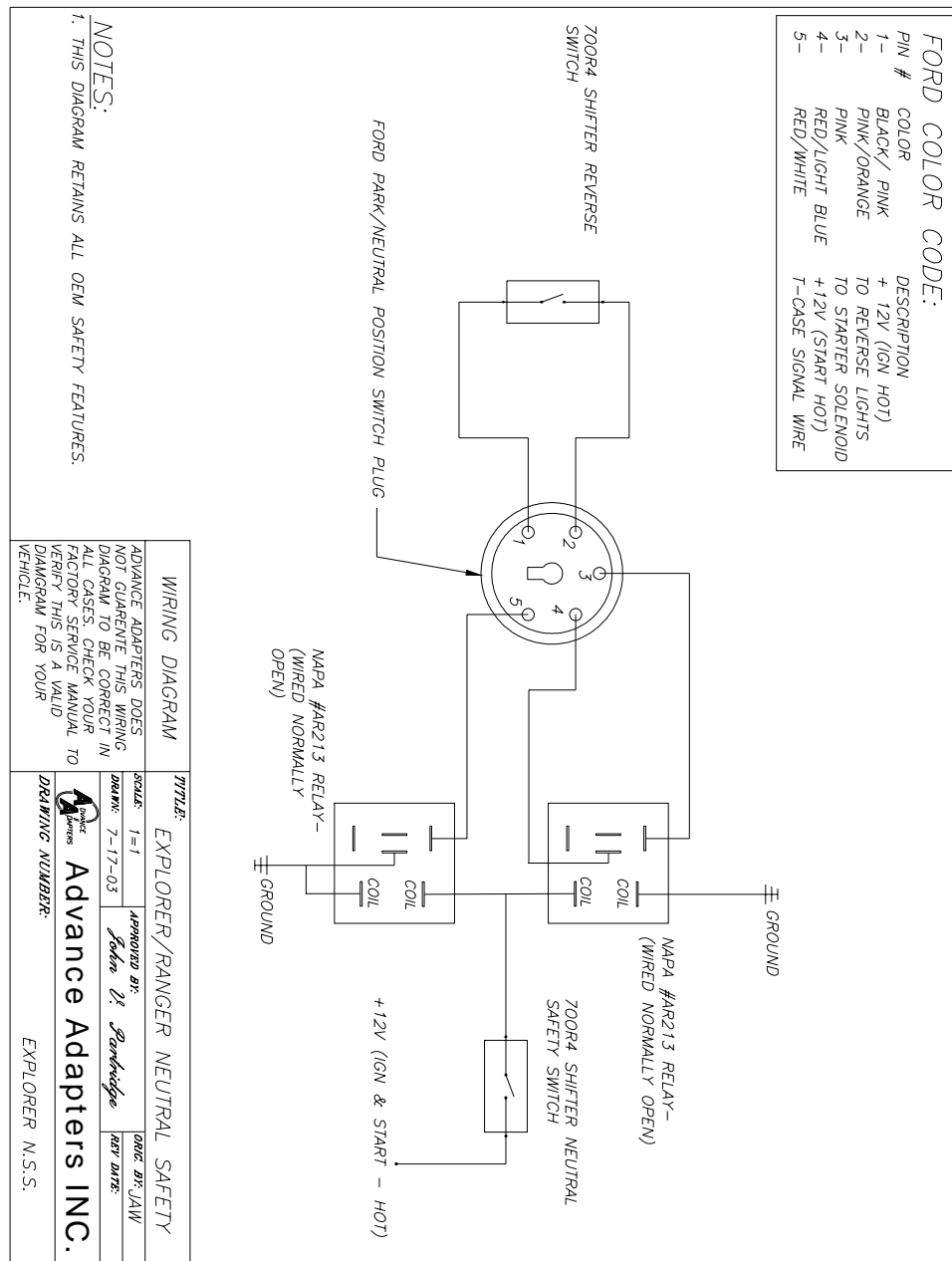
Fax: (805) 238-4201

P/N: 712592

PAGE 5 OF 6

Page Rev. Date: 07-31-03

FORD 4.0L ENGINE TO CHEVY 2.8L 700R4 TRANSMISSION



SPECIAL NOTE: The components packaged in this kit have been assembled and machined for specific type of conversions. Modifications to any of the components will void any possible warranty or return privileges. If you do not fully understand modifications or changes that will be required to complete your conversion, we strongly recommend that you contact our sales department for more information. This instruction sheet is only to be used for the assembly of Advance Adapter components. We recommend that a service manual pertaining to your vehicle be obtained for specific torque values, wiring diagrams and other related equipment. These manuals are normally available at automotive dealerships and parts stores.

SPECIAL NOTE: The components packaged in this kit have been assembled and machined for specific type of conversions. Modifications to any of the components will void any possible warranty or return privileges. If you do not fully understand modifications or changes that will be required to complete your conversion, we strongly recommend that you contact our sales department for more information. This instruction sheet is only to be used for the assembly of Advance Adapter components. We recommend that a service manual pertaining to your vehicle be obtained for specific torque values, wiring diagrams and other related equipment. These manuals are normally available at automotive dealerships and parts stores.