



## Exterior Lighting Condensation Warranty Coverage Job Aid

### Examples of Normal Exterior Lighting Condensation NOT Covered by Warranty

Dry off exterior of vehicle prior to making any evaluations or submitting Digital Imaging Claims

#### DIAGNOSIS

Normal condensation is a natural process. Lamps are vented to reduce increase in pressure. Air naturally contains moisture. When this moist air enter the lamp assembly through the vents, there is a possibility that condensation can occur if the temperature is cold enough. When normal condensation occurs a thin film of mist can form on the interior of the clear plastic lens. The thin mist will eventually clear and exit through the vents during normal operation. The following picture are examples of normal condensation.

#### Non-Warrantable Items:

**Figure 7)** No drip marks/ streaks in the finely condensed film on the interior side of the clear plastic lens.

**Figure 8)** There are no visible water droplets in the thin mist

**Figure 9)** The fine mist does not obstruct the view of the interior of the lamp.

**Figure 10)** Condensation covers less than 50% of the interior side of the lens.

--Headlamps & Taillamps with no visible condensation (i.e. moisture has dissipated)

**Figure 11)** No water droplets in the mist of rearlamps

**Figure 12)** Water droplets outside lens perimeter.



Figure 7: No streaks/ drips marks in the condensation

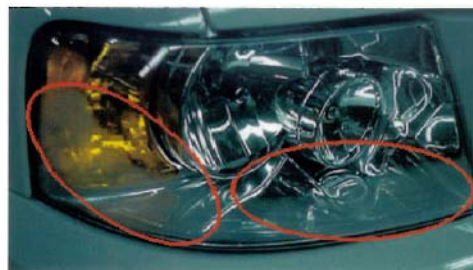


Figure 8: No visible water droplets in the thin mist.



Figure 11: No water droplets in the mist of rearlamps

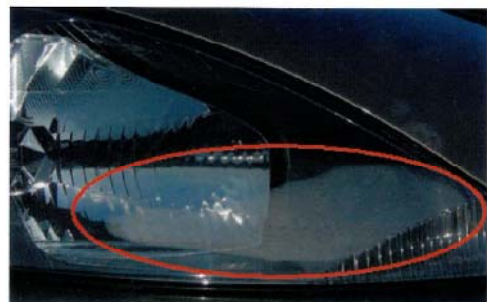


Figure 9: Mist does not obstruct the view of the lamp's interior.

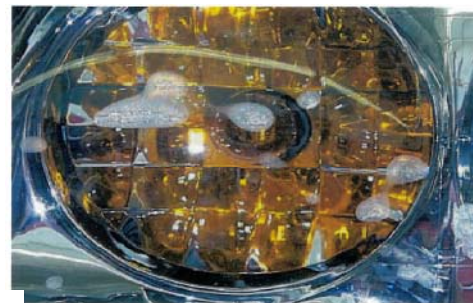


Figure 10: Fine Mist covers less than 50% of the lens



Figure 12: Water droplets outside of lens perimeter.

For extra copies of Exterior Lighting Warranty Coverage Job Aid go to [FMCDealer.com](http://FMCDealer.com), within the Warranty folder link to the Warranty Diagnosis Job Aids sub folder.  
Dealer eStore item#



## Exterior Lighting Condensation Warranty Coverage Job Aid

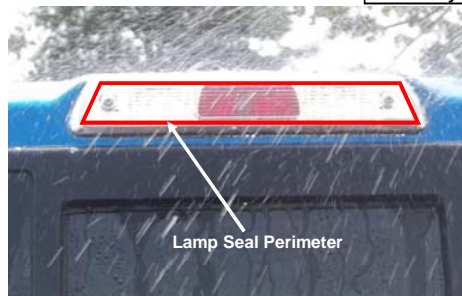
### Examples of Normal Exterior Lighting Condensation NOT Covered by Warranty

#### DIAGNOSIS

Normal condensation is a natural process. Lamps are vented to reduce increase in pressure. Air naturally contains moisture. When this moist air enter the lamp assembly through the vents, there is a possibility that condensation can occur if the temperature is cold enough. When normal condensation occurs a thin film of mist can form on the interior of the clear plastic lens. The thin mist will eventually clear and exit through the vents during normal operation. The following picture are examples of normal condensation.

#### Non-Warrantable Items:

Figure 13) Water droplets outside lens perimeter.



Dry off exterior of vehicle prior to making any evaluations or submitting Digital Imaging Claims

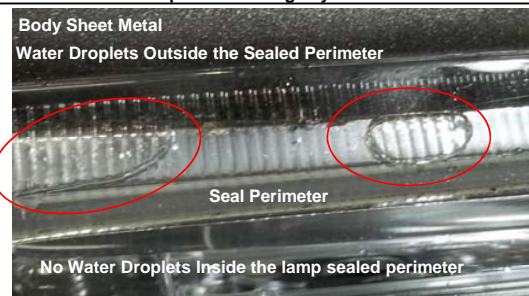


Figure 13: Water droplets outside of lens sealed perimeter.

**F150 CENTER HIGH MOUNT STOP LAMP (CHMSL). WATER DROPLETS OUTSIDE THE LENS-TO-HOUSING SEAL PERIMETER. DROPLETS WILL EVENTUALLY BLOW OUT, OR EVAPORATE.**

For extra copies of Exterior Lighting Warranty Coverage Job Aid go to [FMCDealer.com](http://FMCDealer.com), within the Warranty folder link to the Warranty Diagnosis Job Aids sub folder.  
Dealer eStore item#



## Exterior Lighting Condensation Warranty Coverage Job Aid

### Examples of Non Normal Exterior Lighting Condensation Covered by Warranty

Dry off exterior of vehicle prior to making any evaluations or submitting Digital Imaging Claims

#### DIAGNOSIS

##### IMPORTANT

If a headlamp/rearlamp is diagnosed with having non-normal condensation (a leak), first check TSBs for lamp repair procedure before replacing the lamp. If there is a TSB then follow the repair procedure. If there is no TSB for a repair procedure, then proceed with replacing the lamp.

#### Warrantable Items:

**Figure 1)** Puddles/ pools of water in the interior of the headlamp and or rearlamp.  
**Figure 2)** Large apparent visible droplets of water on the interior side of the clear plastic lens.  
**Figure 3)** Drip marks/ streaks in the film condensation on the interior side of the clear plastic lens.  
**Figure 4)** Thick mist covering a majority of the clear plastic lens. Also, the thick mist obstructs the view of the interior of the lamp.  
**Figure 5)** Drips forming in the film condensation.  
**Figure 6)** Drip marks/ droplets in the interior of the lamp.



Figure 1: Puddle of water

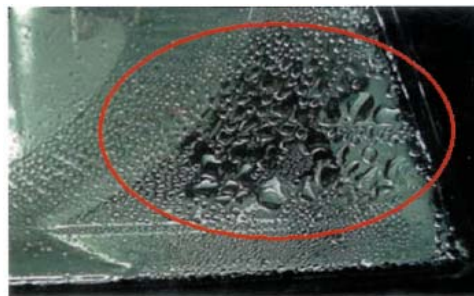


Figure 2: Large water droplets



Figure 5: Drips forming in the film condensation



Figure 3: Drip marks/streaks in condensation



Figure 4: Thick mist covering the lens with water droplets.



Figure 6: Drip marks/droplets in the interior of lamp

For extra copies of Exterior Lighting Warranty Coverage Job Aid go to [FMCDealer.com](http://FMCDealer.com), within the Warranty folder link to the Warranty Diagnosis Job Aids sub folder.  
Dealer eStore item#